

CORRECTIONS

Transmembrane Organization of the Na,K-ATPase Determined by Epitope Addition, by Victor A. Canfield and Robert Levenson*, Volume 32, Number 50, December 21, 1993, pages 13782–13786.

Page 13784. Figure 2 was printed incorrectly. It should appear as follows:

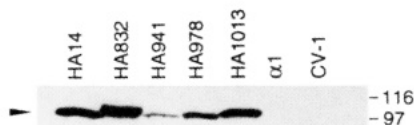


FIGURE 2: Detection of epitope-tagged $\alpha 1$ subunits in cell membranes by immunoblot analysis. Crude membranes were prepared from CV-1 cells stably transfected with HA epitope-tagged or wild-type rat $\alpha 1$ subunit cDNAs or from untransfected CV-1 cells. Solubilized microsomal proteins (80 μ g/lane) were resolved on an SDS-containing 7.5% polyacrylamide gel, transferred to a nitrocellulose filter, and probed with the HA-specific MAb 12CA5. Immunoreactivity was detected by ECL. The positions of molecular mass markers (in kDa) are shown at the right.